



CELEBRATING 39 YEARS OF BRANDING BRILLIANCE



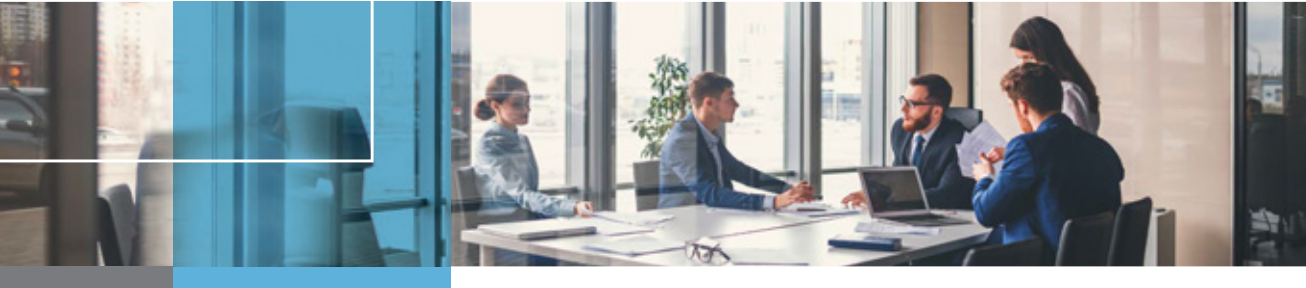
## Reimagine your brand's inner brilliance.

---

Sana is a strategic brand consultancy that redefines the world's leading business enterprises. By combining strategic disciplines with creative expression, we transform our clients' brand narratives into brilliant identity systems that ignite high growth and ensure sustainable profitability.

**THE TRUE ORIGIN** of the word Sana means brilliance, radiance, or splendor through praise.





# Areas of Expertise and Mastery

---

## **BRAND RESEARCH**

- Brand and Name Equity Research
- Brand Positioning Development
- Positioning Evaluation
- Customer Experience Journey
- Creative Evaluation
- Communications Optimization
- Product and Service Innovation

## **BRAND STRATEGY**

- Brand Compass Workshop
- Brand Strategy Consulting
- Company and Product Naming
- Brand Architecture
- Discover Your North Star
- Develop Brand Core
- Brand Positioning and Pillars
- Customer Experience Roadmap

## **BRAND EXPRESSION**

- Corporate Identity
- Brand Visual Expression
- Brand Voice and Tone
- Internal and External Brand Launches
- Social, Digital and Website Development
- Sales Tools and Training
- Brand Collateral and Execution

## **BRAND MANAGEMENT**

- Brand Standards and Guidelines Book
- Infusing the Brand Into Hiring and Training
- Brand Tracking and Measurement
- Brand Compliance





TRUMP



WALT DISNEY

JERRY BRUCKHEIMER FILMS

TAMPA GENERAL HOSPITAL

JPMORGAN CHASE

UNIVERSITY OF SOUTH FLORIDA

NATIONAL GEOGRAPHIC

NICKELODEON

ABBOTT

BANK OF FLORIDA

UNIVERSITY OF WEST VIRGINIA

DISNEY INTERACTIVE

TIME WARNER

BAYER

FOWLER WHITE BOGGS

ALL PRO DAD

HBO

NFL

PFIZER

TRUMP

REEVES IMPORT MOTORCARS

NATIONAL PUBLIC RADIO

BRISTOL-MEYERS SQUIB

GLAXO SMITH KLEIN

FLORIDA FINANCIAL ADVISORS

SIXWATCH

BUENA VISTA PICTURES

JOHNSON & JOHNSON

ANAZAO HEALTH

SMOKEY ROBINSON FOUNDATION

A.R. SAVAGE & SON

TOUCHSTONE PICTURES

MERK

STRYKER

NOKIA - LATIN AMERICA

SELAH FREEDOM

HOLLYWOOD PICTURES

ASTRAZENECA

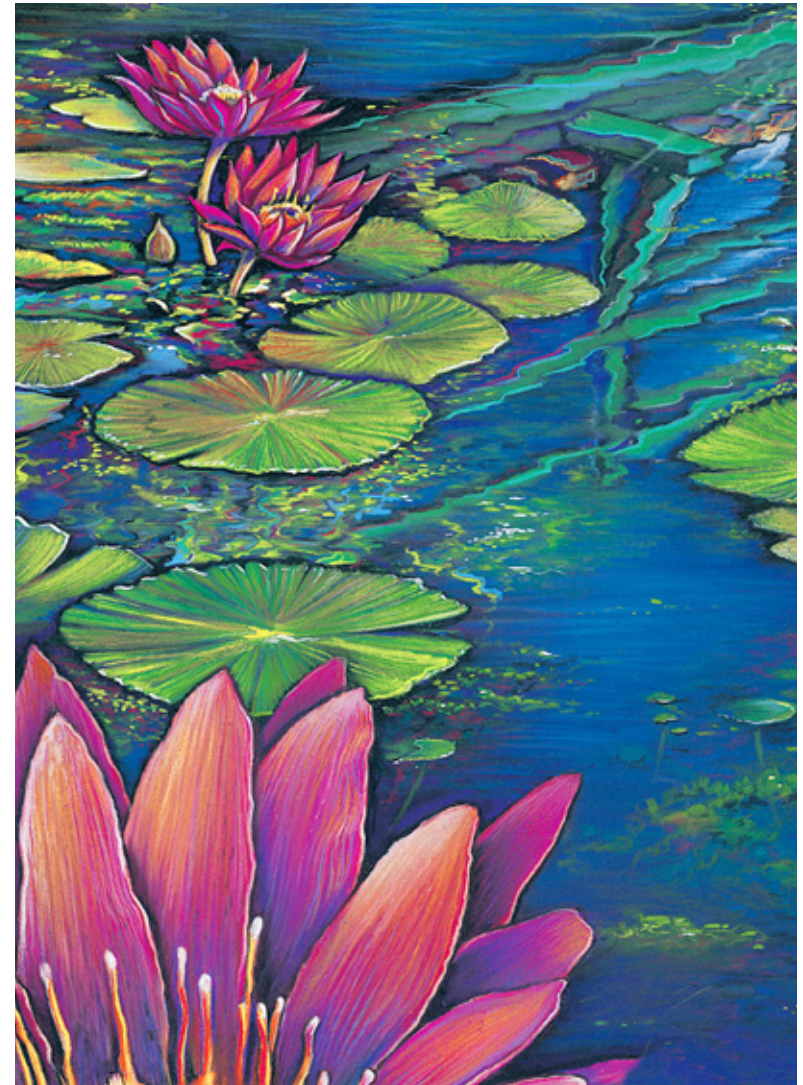
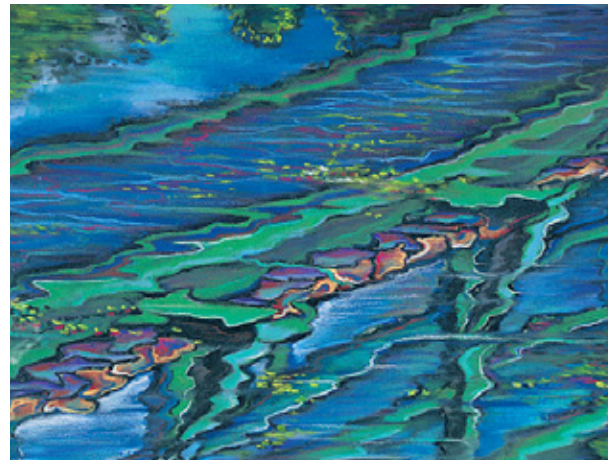
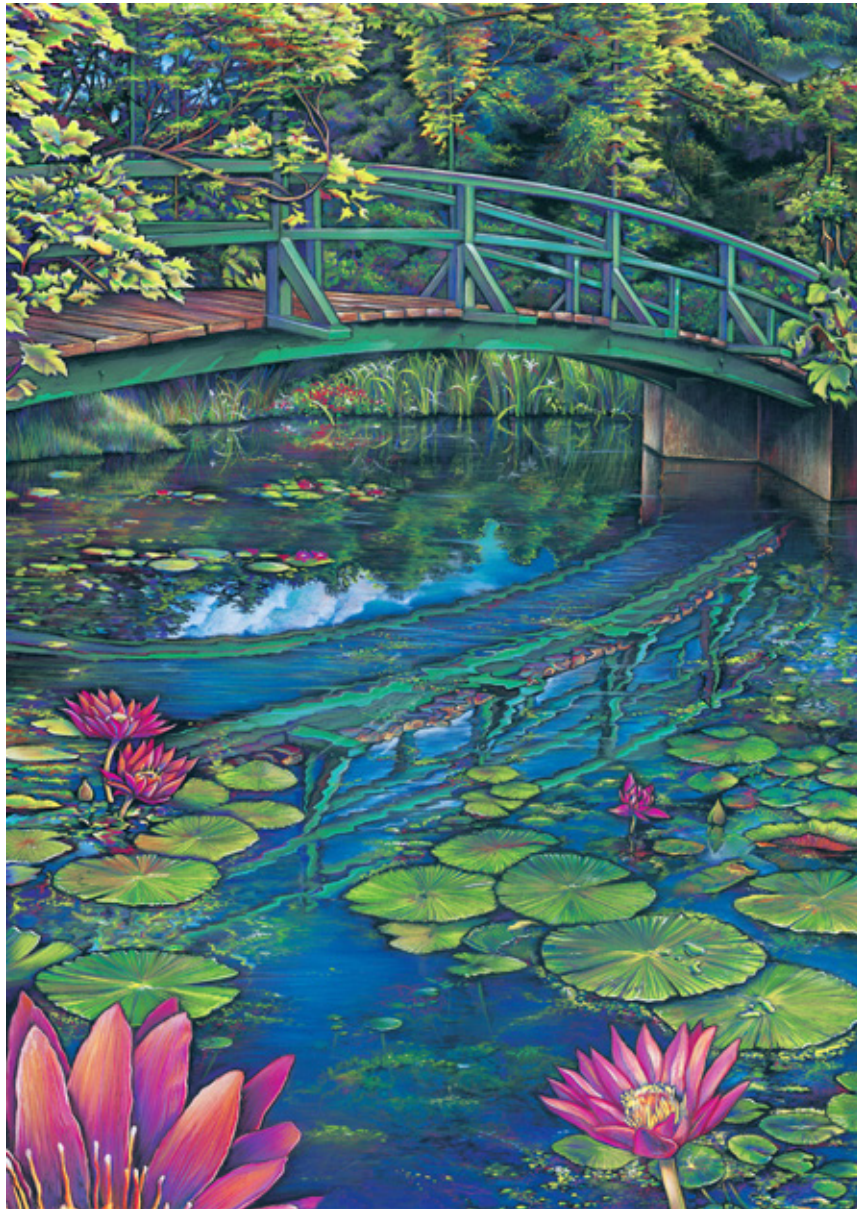
USF HEALTH

BIC - INTERNATIONAL

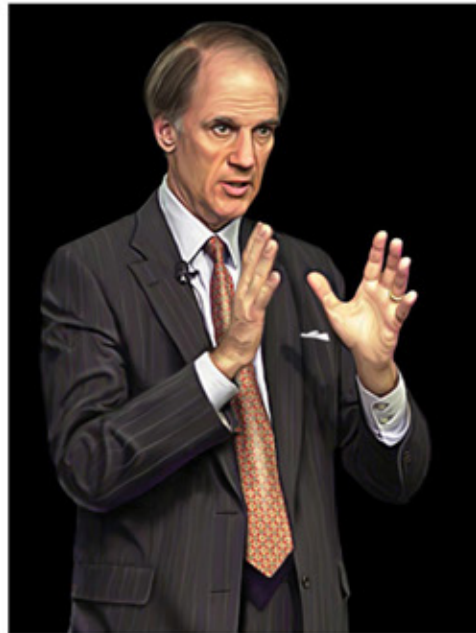
ADVANCED RX



ILLUSTRATION AND DIGITAL ART

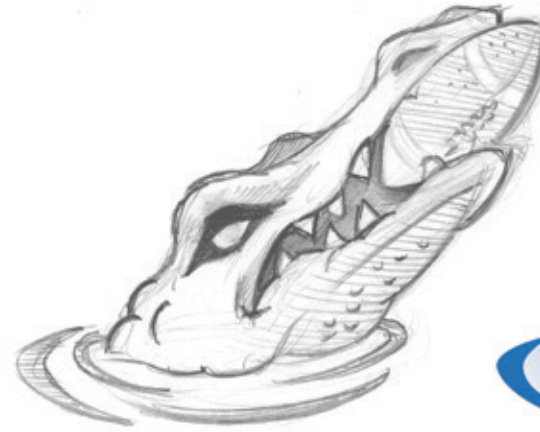














**BRANDING & IDENTITY DESIGN**



**TWISTER**  
The Dark Side of Nature

  
TRUMP TOWER  
*Tampa*  
A DONALD J. TRUMP SIGNATURE PROPERTY

AnazaoHealth™   
Corporation | Create. Heal. Live.

  
THUNDER BAY  
*Seafood Company*

  
FloodGate  
Reinventing Medical  
Recruiting Medical™

WALT DISNEY  
OPERATION DUMBO DROP

  
ALL PRO DAD.™

  
KPIguy™  
a symbol of excellence  
JPMorgan

  
LUKE BROTHERS INC.  
LANDSCAPE SERVICES

  
PALM SHORES  
ORMOND BEACH, FLORIDA  
ULTRA LUXURY OCEANFRONT CONDOMINIUMS

  
BLONDE ALE  
BLUE COLLAR  
BREWING CO.

*Festa Italia*  
SANTA MONICA, CALIFORNIA

















ផលិតផលធម្មជាតិយុទ្ធា


**ANCHORED NATURAL PRODUCTS**  
 phlitaphl thommocheate youthkea  
 No. 160 E2, Preah Sihanouk Boulevard  
 Beoung Keng Kong I, Khan Chamkarmon  
 Phnom Penh, Cambodia  
 Tel: +855 (0) 23 224 487  
 Fax: +855 (0) 23 224 488

[www.anchoredproducts.com](http://www.anchoredproducts.com)




**A NATURAL PATH  
FOR CAMBODIA**

ANCHORED Natural Products was created to make quality useable daily products that are made out of reclaimed wood and other natural materials. We are committed to make products that can help change the world, One Cambodian village at a time.



*Products with a purpose™*  
 ANCORED Natural Products  
 N°.160 E2, Preah Sihanouk Blvd  
 Beoung Keng Kong I, Khan Chamkarmon  
 Phnom Penh, Cambodia  
 Tel: +855 (0) 23 224 487  
[www.anchoredproducts.com](http://www.anchoredproducts.com)









**PRIMARY COLOR PALETTE**


Color is a powerful tool that provides a quick means of identification. Freedom Park maintains an impressive amount of brand equity in our recognizable color scheme. Consistent use of these primary colors will provide a common link among Freedom Park and its marketing, advertising and promotional materials.

**PANTONE 556 C**  
**Green**  
 RGB: 120 154 117  
 HEX/HTML: 789A75  
 CMYK: 35 0 47 34




**PSYCHOLOGICAL MEANING:**  
 Renewal, growth, nature, environment, healthy, good luck, youth, vigor, spring, generosity, peaceful, fertility, and envy.

**COOL GRAY 11 C**  
**Gray**  
 RGB: 84 86 91  
 HEX/HTML: 54565B  
 CMYK: 48 36 24 66



**PSYCHOLOGICAL MEANING:**  
 Security, technology, reliability, intelligence, staid, modesty, dignity, maturity, solid, practical, and conservative.



**PANTONE 7451 C**  
**Blue**  
 RGB: 137 171 227  
 HEX/HTML: 89ABE3  
 CMYK: 46 23 0 0



**PSYCHOLOGICAL MEANING:**  
 Calming, confidence, intelligence, faith, truth, heaven, cleanliness, open spaces, freedom, imagination, expansiveness, and inspiration.

**DOWNLOADING LOGOS**

Our logos are free to download and use for our employees and our partner agencies at [www.freedomparkhub.com](http://www.freedomparkhub.com)

  Photoshop transparent PNG and Illustrator EPS files are both available.

**AROUND THE OFFICE**



CUSTOM MOUSE PAD  
 VARIETY OF DESIGNS

EMBOSSED GIFT NOTE PAD  
 FOR INVESTORS & DONORS





CORPORATE PRINT COLLATERAL



JANUARY 2015  
**03**  
SATURDAY  
7:00AM-9:00AM

REEVES IMPORT MOTORCARS  
**YOU'RE INVITED**  
TAMPA, FLORIDA

**LOCATION:**  
Reeves Import Motorcars

**WHEN:**  
First Saturday of Every Month

**WHO'S INVITED:**  
Car Owners, Enthusiasts and Guests

**VEHICLES WELCOMED:**  
Classic, Exotic, Luxury and Super Cars

**SERVING:**  
Bagels, Muffins and Free Coffee

**ADMISSION:**  
Complimentary

For more information or directions, please email Jeff Wisz at [jwisz@drivereeves.com](mailto:jwisz@drivereeves.com), or call: **813.933.2811**





7:00am - 9:00am  
**01.02.15**

**REEVES MOTORSPORTS GATHERING**

You are invited to Reeves MotorSports Gathering - an exceptional opportunity for car owners and enthusiasts to showcase classic, exotic, luxury and super cars. This exclusive event is hosted at Reeves Import Motorcars the first Saturday of every month. Bring a friend and join us for beignets, free coffee and esprit de corps!

For more information or directions, please email Jeff Wisz at [jwisz@drivereeves.com](mailto:jwisz@drivereeves.com), or call: **813.933.2811**



Twitter: [@MotorsportsR](https://twitter.com/MotorsportsR)

Facebook: [facebook.com/reevesmotorsports](https://facebook.com/reevesmotorsports)

Instagram: [@MotorsportsbyReeves](https://instagram.com/MotorsportsbyReeves)





**MOTORSPORTS GATHERING**

**LOCATION:**  
Reeves Import Motorcars

**WHEN:**  
First Saturday of Every Month

**WHO IS INVITED:**  
Car Owners, Enthusiasts & Guests

**ADMISSION:**  
Complimentary to Public

**SERVING:**  
Coffee and Beignets

7:00am - 9:00am  
**01.02.16**

For more information or directions, please email Jeff Wisz at [jwisz@drivereeves.com](mailto:jwisz@drivereeves.com), or call: **813.933.2811**

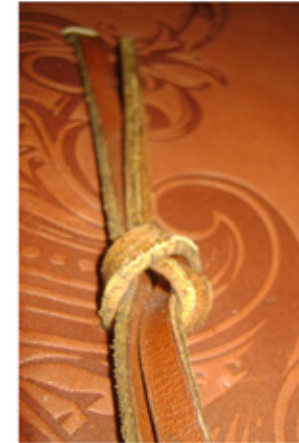
Twitter: [@MotorsportsR](https://twitter.com/MotorsportsR)

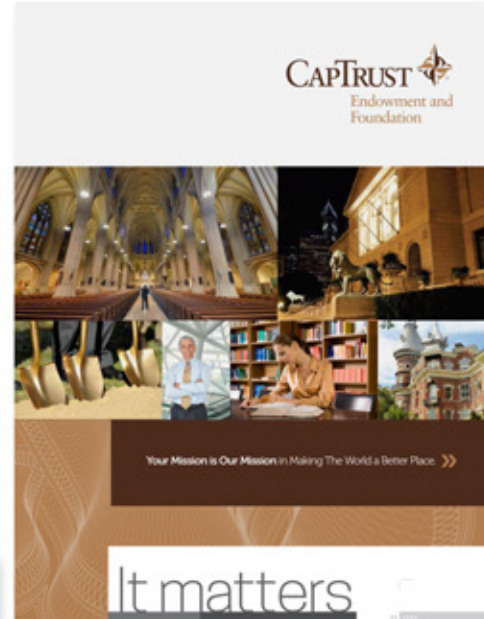
Facebook: [facebook.com/reevesmotorsports](https://facebook.com/reevesmotorsports)

Instagram: [@MotorsportsbyReeves](https://instagram.com/MotorsportsbyReeves)













**CAPTRUST**  
Private Wealth  
Solutions

Protecting Your Ability to Live Life The Way You Want.

**OFFICE LOCATIONS**

**Tampa**  
1000 Bay Street, Suite 400  
Tampa, FL 33602  
Telephone: (813) 224-0000

**Atlanta**  
1000 Bay Street, Suite 400  
Atlanta, GA 30309  
Telephone: (404) 524-0000

**Wheat**  
1000 Bay Street, Suite 400  
Wheat, IL 60187  
Telephone: (630) 344-0000

**TOLL FREE (888) 697-5908**  
www.captrustads.com  
privatewealth@captrustads.com

CapTrust Advisors' registration as an investment adviser with SEC & Securities and Exchange Commission is effective as of March 15, 2011. CapTrust Advisors' registration as an investment adviser with SEC & Securities and Exchange Commission is effective as of March 15, 2011. CapTrust Advisors' registration as an investment adviser with SEC & Securities and Exchange Commission is effective as of March 15, 2011. CapTrust Advisors' registration as an investment adviser with SEC & Securities and Exchange Commission is effective as of March 15, 2011. CapTrust Advisors' registration as an investment adviser with SEC & Securities and Exchange Commission is effective as of March 15, 2011.

**CAPTRUST**  
Private Wealth  
Solutions

For Individuals or Families with Investable Assets of \$1,000,000+.

With over 100 years of combined experience in managing individuals and families wealth, our team at CapTrust provides objective investment and comprehensive wealth advisory services. Our aim is to help each of our clients understand their personal circumstances, develop a tailored strategy and regularly monitor progress against agreed upon objectives.

We treat investing as a business. Our clients typically have many other responsibilities. To ensure our relationship is well-managed, our process, programs and decision making must be organized and carefully scrutinized on a systematic basis. We provide regular monthly statements and a comprehensive quarterly report for each client.

CapTrust can add value without disrupting your existing investment relationships. We work closely with you to help you better understand how each investment relationship fits, we develop an easy-to-understand, tailored reporting system which allows for closely monitoring progress towards goals.

"Success is not always measured in dollars and cents, but protecting the ability to live the life we want for ourselves and our families"

Wealth may last a lifetime, but a legacy will last forever.

CapTrust adds value in all pillars of the wealth management process by augmenting proficiency in client relationships while providing guidance in this specific area of concentration.

We collaboratively work with our clients' team of professionals that perform services including Estates and Trusts Attorney's, CPAs, Family Office Directors, Financial Planners and other advisors and agents. It is our custom that CapTrust professionals have an understanding and appreciation of our clients' family dynamics and provide advice that spans multiple generations.

The first step in this process involves contacting us to arrange a personal meeting to discuss your situation and goals. That can be done by clicking the email icon on this screen. We will respond promptly. You will find more information about our comprehensive investment process under Our Approach section of this website. Please visit Team of Professionals area to preview the professional capabilities of our full team of professionals.

**The Four Pillars of Wealth**

CapTrust Private Wealth provides multigenerational wealth planning solutions for affluent families across the four pillars of wealth.

- 1. Lifestyle Management**  
In order to fully serve our clients and their families, getting a full understanding of their desired lifestyle is paramount to success. We do this by offering a variety of services specifically designed to engage families across generations.
- 2. Liability Management**  
Creating a financial plan for success requires managing both sides of a balance sheet. Ensuring your liabilities are structured in the most efficient way possible is a necessary piece of the puzzle needed to create a complete picture.
- 3. Asset Management**  
Once a survey of your unique financial landscape is complete, and the direction is known, we will assist you with making prudent investment decisions. Since growth of assets is important, the preservation of those assets is equally important to reaching your goals.
- 4. Risk Management**  
Now that a financial plan is in place and implemented, we collaboratively review items that could reduce the potential for your success. Developing a pre-emptive plan to manage potential risk will further protect your wealth and the well-being of your family.



# 01

We've got your six!

OUR CONTINUUM OF TOTAL IT CARE. STRATEGY, SECURITY & SUPPORT

**// PEACE OF MIND**  
**TOTAL BACKUP CARE**

- Business Continuity Planning
- Backup & Disaster Recovery

**// ASSURANCE**  
**TOTAL IT CARE**

- Help Desk Support
- 24/7 Managed IT
- Virtual CIO
- Firewall & Malware Protection

**// PROTECTION**  
**TOTAL SECURITY CARE**

- Regulatory & Compliance Services
- End Point Defense/EDR Services
- Cyber Attack Defense

**// STRUCTURE**  
**TOTAL CLOUD CARE**

- Full on Hybrid Cloud Migration
- Office 365
- VoIP Phone Services
- Virtualization

**// SYNCHRONICITY**  
**TOTAL DEVELOPMENT CONSULTING**

- Workflow Development
- Custom Web Development
- Salesforce Consulting and Development

**// INSIGHT**  
**TOTAL STRATEGY**

- Outline business goals and objectives
- Define your scope, stakeholders and timeline
- Review your existing setup
- Create a roadmap
- Establish your metrics

Support: 888.298.8000 | [SIXWATCH.COM](http://SIXWATCH.COM)

# 03

We're always ready for deployment!

**HEADQUARTERS**  
1646 W. Shaw Ave. Suite 140  
Tampa, FL 33606  
[sixwatch.com](http://sixwatch.com)

**CONTACT**  
Support: 888.298.8000  
Office: 813.815.6000  
[info@sixwatch.com](mailto:info@sixwatch.com)

Stronger together™

TOTAL IT CARE: STRATEGY, SECURITY, AND SUPPORT FOR GROWING COMPANIES.

Stronger together™



Stronger together™



## Our Heritage

At Sixwatch, we are dedicated to providing exceptional service to our clients each day. By partnering with us, you can expect a customized experience that focuses on the growth and well-being of your business. Our services include cloud, backup, security, strategy, and development.

Simply having the right tools is not enough to achieve sustainable and secure success. To effectively utilize these tools and make progress towards your goals, you need the expertise of a dependable managed IT service and security provider. Sixwatch was created to help SMEs reach their full potential by combining the appropriate strategy with the right tools. We offer two outstanding packages - our premium package Alpha and our core package Bravo - to provide total IT care and help you achieve your objectives.

**EXECUTIVES**

Our focus is on providing exceptional support for executives and leaders with a vision for growth. We offer responsive, hands-on IT assistance to manage risks associated with your IT infrastructure, systems, and data.

**MANAGERS**

Achieving your end goals and targets while ensuring the satisfaction of your employees and managing your processes is crucial. However, you don't have to tackle these challenges by yourself.

**INDIVIDUALS**

Individual contributors are crucial to the success of organizations. At Sixwatch, our team of IT experts is always prepared to address any IT-related obstacles that may be hindering your progress.

## Above & Beyond

At Sixwatch, we are dedicated to providing exceptional service to our clients each day. By partnering with us, you can expect a customized experience that focuses on the growth and well-being of your business. Our services include cloud, backup, security, strategy, and development.

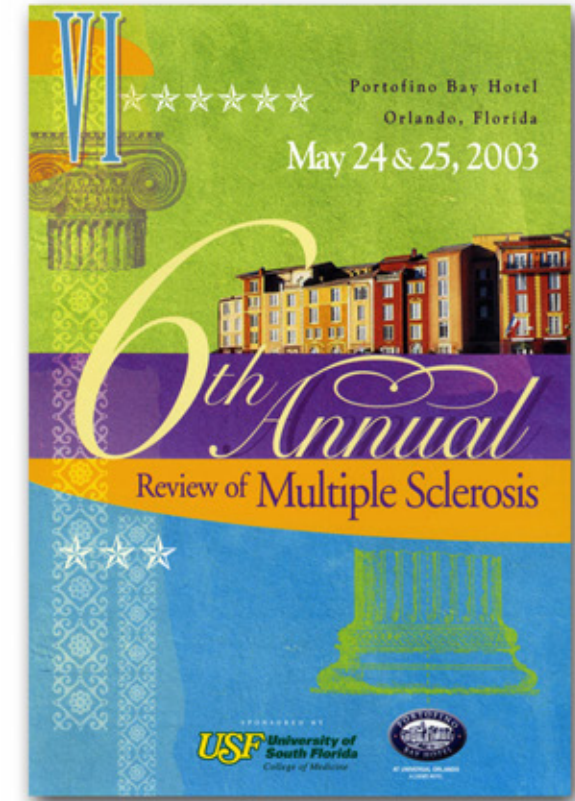
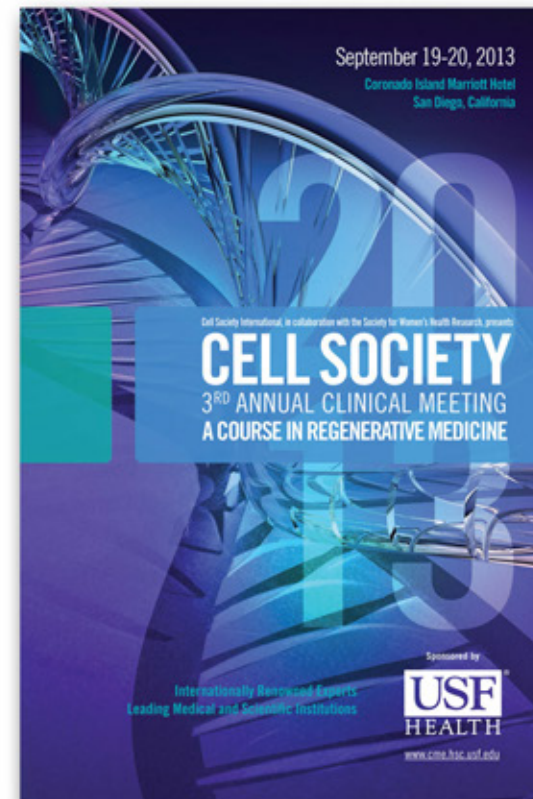
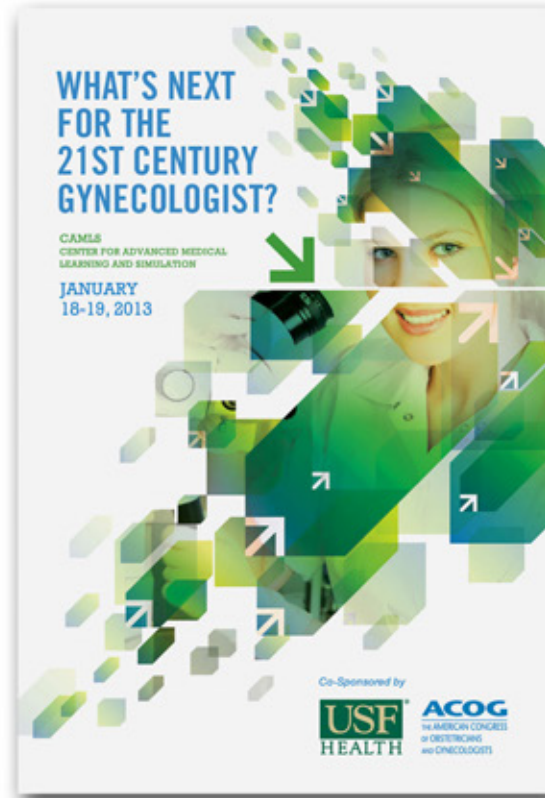
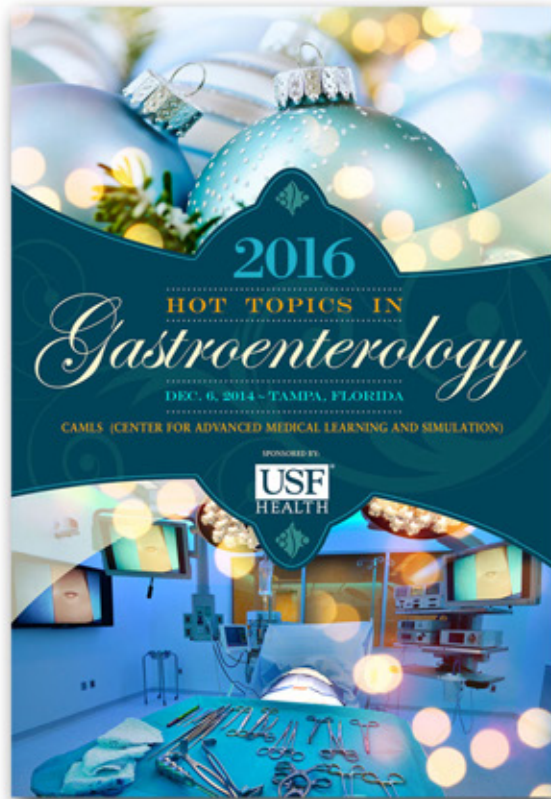
Simply having the right tools is not enough to achieve sustainable and secure success. To effectively utilize these tools and make progress towards your goals, you need the expertise of a dependable managed IT service and security provider. Sixwatch was created to help SMEs reach their full potential by combining the appropriate strategy with the right tools. We offer two outstanding packages - our premium package Alpha and our core package Bravo - to provide total IT care and help you achieve your objectives.

# 02

WE'VE GOT YOUR SIX!

SUPPORT: 888.298.8000

[SIXWATCH.COM](http://SIXWATCH.COM)





# It matters what you experience with us.

**ProCare**  
Transportation • Language • Travel

## A Savings Driven Approach

ProCare saves clients 20% by having a 45% lower failure rate than its competitors.

**20% CLIENT SAVINGS** **45% FAILURE RATE**

## Who Why How

## 6-Point Provider Ranking Algorithm

Ensuring injured workers receive services from our top ranking providers - every time.

ProCare's 6-Point Provider Ranking Algorithm ranks providers with a maximum score of up to 100 points for each of the provider's categories of coverage. Rankings are based on the provider's rates, services, and compliance with the required credentialing documentation. The highest ranked providers are our preferred choice for staff, available transparency and interconnectivity.

**6-Point Provider Ranking Algorithm**

1. Quality
2. Network Status
3. Provider Class
4. Utilization
5. Base County
6. Cost

**Upper Level Providers**  
Provider has experienced no service issues and no complaints. Provider has a strong track record. They are considered from the ProCare network.

**Mid Level Providers**  
Provider has experienced a service issue or provider has been given the opportunity to improve service by receiving coaching regarding service issues and has met ProCare's high expectations or they will be expected to show improvement or they will be considered for deactivation.

**Lower Level Providers**  
Provider has experienced several service issues or their credentials are not on file or out of date. Provider has been given the opportunity to address concerns and has failed to provide satisfactory improvement service to an acceptable level. Providers failing in this category will not be allowed for assignments and face termination.

**REFERRALS: 866.941.7878** **WWW.THEPROCARE.COM**

## Connect With Us Today!

**TRANSPORTATION**  
Autism  
Language  
Travel  
Disability  
As a Division

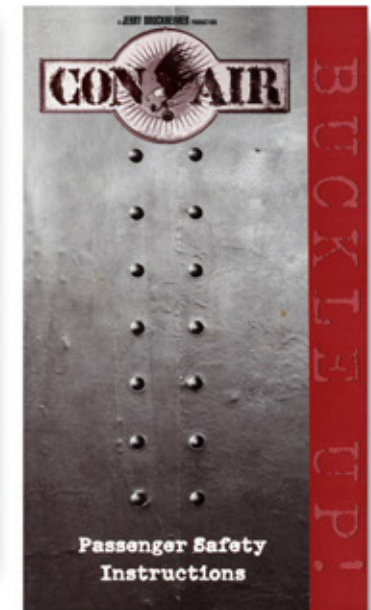
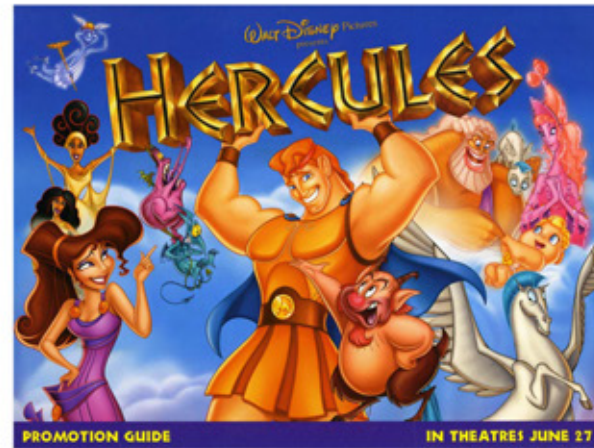
**LANGUAGE**  
Disability  
Autism  
Travel  
Disability

**TRAVEL**  
Language Services  
Disability  
Autism  
Travel

**ProCare, Inc.**  
Executive Office  
4715 Eisenhower Blvd  
Tampa, FL 33634  
Tel: 866.941.7878  
Fax: 813.759.3890  
operations@theprocare.com  
info@theprocare.com

For sales inquiries please call  
Tel: 813.759.3890  
or email  
sales@theprocare.com

**REFERRALS: 866.941.7878** **WWW.THEPROCARE.COM**







**Bio Mini-Revo Fixation System**

**Bio Mini-Revo Surgical Technique**

**MINI SIZED, MAXIMUM PERFORMANCE**

- Self-Reinforced PLLAD Poly Lactic Acid
- Low Profile Instrument Set
- High Pull-out Strength
- Proven Suture-in Design Ensures Optimal Purchase in Bone

**Bio Mini-Revo<sup>®</sup> Surgical Technique**

Implant Description	Cat. No.
Bio Mini-Revo, Prefabricated with one strand of #2 PDS <sup>®</sup> absorbable suture	C8170H
<b>Bio Security Instrument Set</b>	
Bio Security Drill Guide, 1/8" Shaft	C8171
Bio Security DHP Guide, Standard	C8172
Start Clamp	C8173
Stop Tissue	C8174
Bio Security Drill Bit, 3.1mm	C8175
Bio Security Bone Punch, 3.1mm	C8176
Bio Security Softening Stone, Type 1, 3mm	C8177
Bio Security Softening Stone, Type 2, 3mm	C8178
<b>Suture Fixation Instrumentation</b>	
Spectrum II Fixation Tray	C8200
Spectrum II Suture Retrieval Replacement Kit	C8201
Suture Hook, 40° Right, Limited Range	C8202
Suture Hook, 40° Left, Limited Range	C8203
Suture Hook, 40° Right, Limited Range	C8204
Suture Hook, 40° Left, Limited Range	C8205
Suture Hook, 90° Right, Limited Range	C8206
Suture Hook, 90° Left, Limited Range	C8207
Suture Hook, 45° Right, Limited Range	C8208
Suture Hook, 45° Left, Limited Range	C8209
Suture Hook, 30° Right, Limited Range	C8210
Suture Hook, 30° Left, Limited Range	C8211
Suture Hook, 15° Right, Limited Range	C8212
Suture Hook, 15° Left, Limited Range	C8213
Suture Hook, 0° Right, Limited Range	C8214
Suture Hook, 0° Left, Limited Range	C8215
Suture Hook, Crescent, Small, Limited Range	C8216
Suture Hook, Crescent, Medium, Limited Range	C8217
Suture Hook, Crescent, Large, Limited Range	C8218
Suture Hook, 40° Right, Swivel, Disposable (Ball)	C8219
Suture Hook, 40° Left, Swivel, Disposable (Ball)	C8220
Suture Hook, 40° Right, Swivel, Disposable (Orange)	C8221
Suture Hook, 40° Left, Swivel, Disposable (Orange)	C8222
Suture Hook, Straight, Swivel, Disposable (Ball)	C8223
Suture Hook, Straight, Swivel, Disposable (Pink)	C8224
Suture Hook, Crescent, Swivel, Swivel, Disposable (Ball)	C8225
Suture Hook, Crescent, Swivel, Swivel, Disposable (Ball)	C8226
Suture Hook, Crescent, Large, Swivel, Disposable (Purple)	C8227
<b>Accessories</b>	
Long Handle Knot Puller	C8113
Crochet Hook	C8110
Suture Retrieval 3.0mm Diameter, Straight	Q8100
Quillette <sup>®</sup> Suture Cutter, 3.0mm Diameter, Straight	Q8107
Quillette <sup>®</sup> Suture Cutter, 3.0mm Diameter, Straight with Ratchet	11-1001
Suture Retrieval Forceps, 3.0mm Diameter	16-1018
Quillette <sup>®</sup> Forceps	28-3014
Suture Sizer <sup>™</sup> #2 (3.1mm)	C8188
Mini-Ultrasonic Probe	26-8017
Revo <sup>®</sup> 20 Degree, Ang and Soften variations	C8211
Mini-Probe, 3.0mm dia., straight	21-1001
Shaver Revo <sup>®</sup> Reamer Power (300W)	C8208
Shy Dog <sup>™</sup> Cannula, 8.0mm x 19mm, yellow (Short)	C7247
Retractor, Cannulated (Distraction, 8.0mm x 19mm)	8823
Shy Dog <sup>™</sup> Cannula, 8.0mm x 19mm, white (Short)	C7248
Retractor, Cannulated (Distraction, 8.0mm x 19mm)	8824

\*Build to order, not CE marked

**CONMED CORPORATION PRODUCT AREAS:**  
 ARTHROSCOPY • ELECTROCAUTERY • ENDOSCOPY • INSTRUMENTS • SAFETY INSTRUMENTS • MISCELLANEOUS • POWERED INSTRUMENTS • PLASMA COAGULATION

**CONMED LYNATEC**  
 31311 Concept Boulevard  
 Largo, FL 33773-4908  
 (727) 392-5454  
 Customer Service: 1-800-237-0109

FAX: (727) 399-5256  
 International FAX: +1 (727) 397-4540  
 email: customer\_service@lynathec.com  
 www.lynathec.com

©2024 Sana Branding. A subsidiary of CONMED Corporation. C2024A-128-2024

**ThRevo<sup>®</sup> Shoulder Fixation System**

For multiple fixation points and versatile suture placement - the FIRST triple loaded anchor on the market

**ThRevo<sup>®</sup> Suture Anchor Surgical Technique**

**SUPERIOR STRENGTH & SUTURE MANAGEMENT**

- Three sutures provide multiple fixation points
- Allows for versatile suture placement options
- Optimized thread profile for increased pull-out strength
- Self-activating suture anchor
- Prefabricated with Revo #2 PDS<sup>®</sup> high strength suture

**ThRevo<sup>®</sup> Shoulder Fixation System**

Implant Description	Cat. No.
ThRevo <sup>®</sup> Suture Anchor, 8.0mm, prefabricated on a disposable driver prefabricated with Revo #2 PDS <sup>®</sup> high strength suture, blue/black stripes, and blue/black stripes	C8143H
ThRevo <sup>®</sup> Suture Anchor, 8.0mm, prefabricated on a disposable driver prefabricated with Revo #2 knotted polyester suture, white w/ green stripes and white	C8143L
<b>Suture Fixation Instrumentation</b>	
Spectrum II Fixation Tray	C8200
Spectrum II Suture Retrieval Replacement Kit	C8201
Suture Hook, 40° Right, Limited Range	C8202
Suture Hook, 40° Left, Limited Range	C8203
Suture Hook, 40° Right, Limited Range	C8204
Suture Hook, 40° Left, Limited Range	C8205
Suture Hook, 90° Right, Limited Range	C8206
Suture Hook, 90° Left, Limited Range	C8207
Suture Hook, 45° Right, Limited Range	C8208
Suture Hook, 45° Left, Limited Range	C8209
Suture Hook, 30° Right, Limited Range	C8210
Suture Hook, 30° Left, Limited Range	C8211
Suture Hook, 15° Right, Limited Range	C8212
Suture Hook, 15° Left, Limited Range	C8213
Suture Hook, 0° Right, Limited Range	C8214
Suture Hook, 0° Left, Limited Range	C8215
Suture Hook, Crescent, Small, Limited Range	C8216
Suture Hook, Crescent, Medium, Limited Range	C8217
Suture Hook, Crescent, Large, Limited Range	C8218
Suture Hook, 40° Right, Swivel, Disposable (Ball)	C8219
Suture Hook, 40° Left, Swivel, Disposable (Ball)	C8220
Suture Hook, 40° Right, Swivel, Disposable (Orange)	C8221
Suture Hook, 40° Left, Swivel, Disposable (Orange)	C8222
Suture Hook, Straight, Swivel, Disposable (Ball)	C8223
Suture Hook, Straight, Swivel, Disposable (Pink)	C8224
Suture Hook, Crescent, Swivel, Swivel, Disposable (Ball)	C8225
Suture Hook, Crescent, Swivel, Swivel, Disposable (Ball)	C8226
Suture Hook, Crescent, Large, Swivel, Disposable (Purple)	C8227
<b>Spectrum II Accessories</b>	
Spectrum II Fixation Tray	C8200
Suture Hook, Suture Hook, 8.0mm needle	16-1018
Spectrum II Suture Retrieval Replacement Kit	C8201
Quillette <sup>®</sup> Forceps, 3.0mm, 1.5mm and 1.0mm (White)	C8100
<b>Accessories</b>	
Multi-Block <sup>®</sup> Suture Force (30 per load)	C8204
Super Revo <sup>®</sup> Resorver (Sickle)	C8143
Long Handle Knot Puller	C8113
Crochet Hook	C8110
Quillette <sup>®</sup> Forceps	28-3014
Mini-Ultrasonic Probe	26-8017
Revo <sup>®</sup> 20 Degree, Ang and Soften variations	C8211
Mini-Probe, 3.0mm dia., straight	21-1001
Shaver Revo <sup>®</sup> Reamer Power (300W)	C8208
Shy Dog <sup>™</sup> Cannula, 8.0mm x 19mm, yellow (Short)	C7247
Retractor, Cannulated (Distraction, 8.0mm x 19mm)	8823
Shy Dog <sup>™</sup> Cannula, 8.0mm x 19mm, white (Short)	C7248
Retractor, Cannulated (Distraction, 8.0mm x 19mm)	8824
Revo <sup>®</sup> Ultrasonic Probe	26-8017
Revo <sup>®</sup> Ultrasonic Probe	26-8017

**CONMED CORPORATION PRODUCT AREAS:**  
 ARTHROSCOPY • ELECTROCAUTERY • ENDOSCOPY • INSTRUMENTS • SAFETY INSTRUMENTS • MISCELLANEOUS • POWERED INSTRUMENTS • PLASMA COAGULATION

**CONMED LYNATEC**  
 31311 Concept Boulevard  
 Largo, FL 33773-4908  
 (727) 392-5454  
 Customer Service: 1-800-237-0109

FAX: (727) 399-5256  
 International FAX: +1 (727) 397-4540  
 email: customer\_service@lynathec.com  
 www.lynathec.com

©2024 Sana Branding. A subsidiary of CONMED Corporation. C2024A-128-2024



**Special Invitation!**

Ribbon Cutting and Grand Opening Ceremony  
Coming April 2017

**flow**  
FITNESS  
REVIVING WOMEN™

**Let's Celebrate!**

**Ribbon Cutting**  
Friday, April 21, 2017 - 3:00pm - 5:00pm

**Grand Opening Ceremony**  
Saturday, April 22, 2017 - 11:00am - 2:00pm

Let's admit it, everyone loves a great party! Flow Fitness is pleased to announce our Ribbon Cutting and Grand Opening ceremony located at Riverview's first specialty fitness boutique. And here's the cool part, you and your family are invited. Flow Fitness provides women with a variety of specialty fitness classes fueled by pure music within a virtuous environment. We look forward to seeing you there!

Special thanks to:

**flow FITNESS**  
11221 US Hwy 301 South - Suite 101  
Riverview, FL 33578

Special Grand Opening Pricing: No Enrollment Fees. Sign up online and receive your first class free! Or get 30% off your 1st month when you sign up as a party "Flow Star" member.

Schedule a class, sign-up online today, or join our conversations through our social media sites. Call today: 813.375.3699

[www.flowfitnessboutique.com](http://www.flowfitnessboutique.com)

0477 \*\*\*\*\*CNDJ\*\*@-035  
0953920-00021-0779-000-1143  
Mr. Jeff Doss  
Or Current Resident  
7339 Carillon Arms Dr., Apt. F  
New Port Richey FL 34653-6828

ATTENTION TAMPA BAY MERCEDES BENZ OWNERS!

WHEN YOU SEE THIS... [SERVICE] THINK THIS...

**DJ's**  
EURO SERVICE

11333 North Florida Avenue  
Tampa, Florida 33612

0477 \*\*\*\*\*CNDJ\*\*@-035  
0953920-00021-0779-000-1143  
Mr. Jeff Doss  
Or Current Resident  
7339 Carillon Arms Dr., Apt. F  
New Port Richey FL 34653-6828

ATTENTION TAMPA BAY  
FERRARI OWNERS!

FOR UNSURPASSED SERVICE  
AND UNBEATABLE PRICES  
AT ONE CONVENIENT LOCATION,  
VISIT DJ'S EURO SERVICE.

**DJ's**  
EURO SERVICE

**At DJ's Euro Service**

we encourage regular maintenance for your investment. But a properly maintained vehicle will be more reliable and maintain its value longer. Regular maintenance by having your drivetrain operating at peak efficiency is the key.

... We offer comprehensive services for your vehicle based on factory recommendations. Our factory-trained staff takes the utmost care in restoring the legendary craftsmanship.

... We offer high performance tires for your vehicle at competitive prices. Let our highly trained alignment center mount and balance your tires, using the latest equipment. We will align your vehicle to factory specifications using the proper angling and adjustment techniques. We offer NitroFit for the added peace of mind and maintenance free driving.

**Contact Us:**  
Hours: Monday - Friday 7am - 7pm  
24-hour Towing: Contact Doss's Towing at 813-621-8621, for 24-hour tow service to our facility. Also we feature 24-hour, secure vehicle drop-off on weekends or after hours.

Located just minutes North of Downtown Tampa, on the corner of Florida Ave. and Foster Ave.

**DJ's**  
EURO SERVICE

11333 North Florida Avenue  
Tampa, Florida 33612

Schedule an appointment online at  
[www.reevesimportmotorcars.com](http://www.reevesimportmotorcars.com)  
or call 813-375-3699 today.

0477 \*\*\*\*\*CNDJ\*\*@-035  
0953920-00021-0779-000-1143  
Mr. Jeff Doss  
Or Current Resident  
7339 Carillon Arms Dr., Apt. F  
New Port Richey FL 34653-6828

SPECIAL OFFER

**15% OFF** for Mercedes recommended services

**Mercedes Benz FSS**

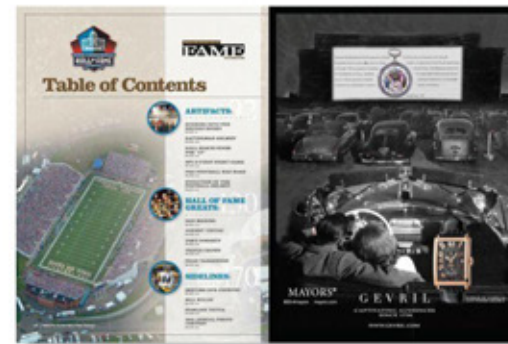
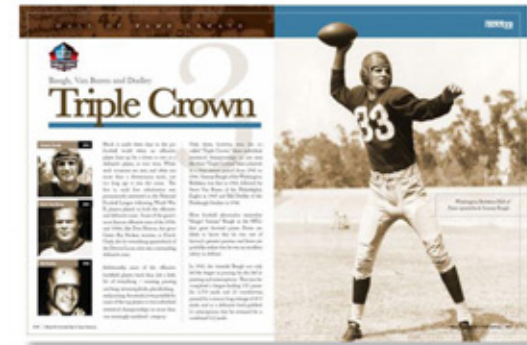
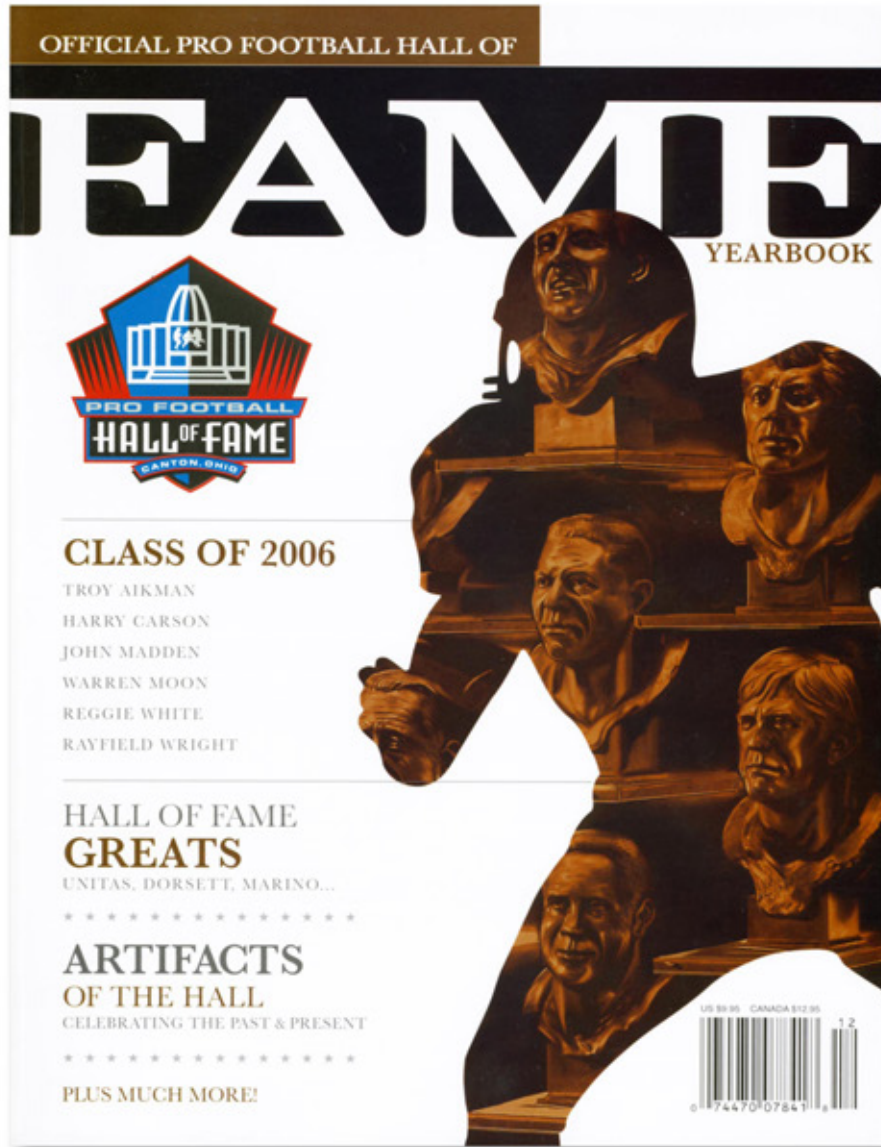
The Mercedes Benz flexible service option permits service on Friday which is dependent on the customer's individual driving habits. The most service due to change in the driver's maintenance cycle. The display indicates the days or distance available until the next recommended service.

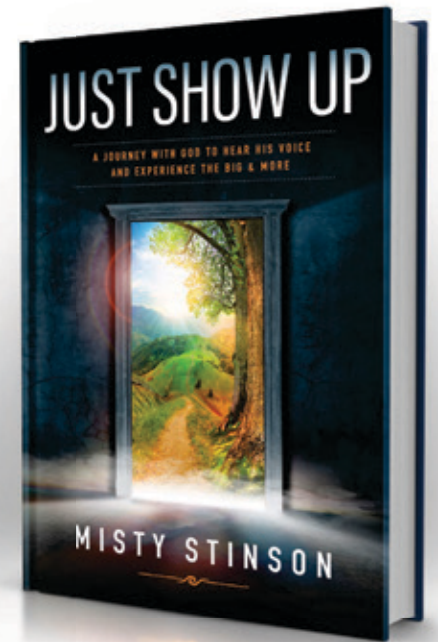
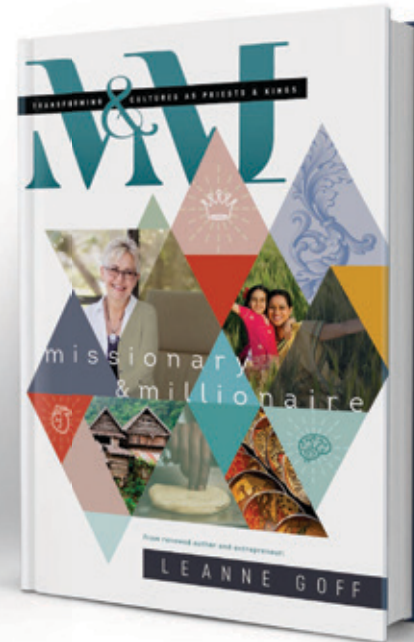
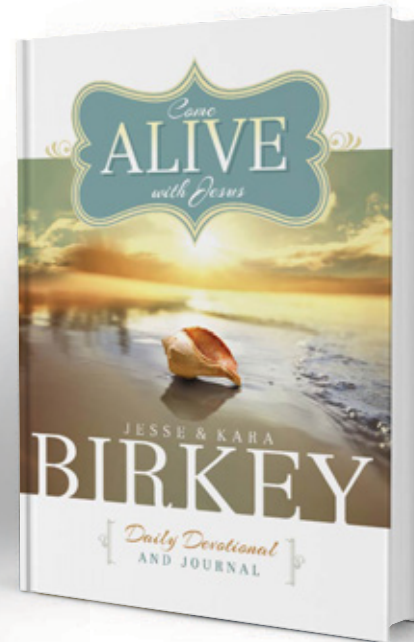
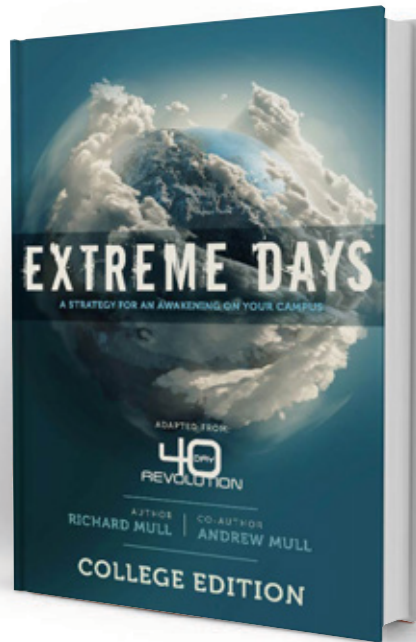
<b>A Flexible Service</b> Recommended at 10,000 miles or one year, after 10,000 miles or 1 year, whichever comes first. Includes: Oil change, tire rotation, brake inspection, fluid top-off, and more.	<b>B Flexible Service</b> Recommended at 10,000 miles or 1 year, after 10,000 miles or 1 year, whichever comes first. Includes: Oil change, tire rotation, brake inspection, fluid top-off, and more.
---	---

**HOW TO REDUCE COSTS:**  
Present this flyer to service manager at the time of service for service 15% OFF your scheduled FSS.

0477 \*\*\*\*\*CNDJ\*\*@-035  
0953920-00021-0779-000-1143  
Mr. Jeff Doss  
Or Current Resident  
7339 Carillon Arms Dr., Apt. F  
New Port Richey FL 34653-6828







AS SEEN ON  AVAILABLE FOR PURCHASE



ADVERTISING, OUTDOOR AND EXHIBIT





SEARCH

THE SEARCH FOR ULTRA-LUXURY CONDOMINIUMS IS OVER.

*Escape to oceanfront living.* Our idea of an elegant lifestyle includes panoramic views of spectacular sunrises, the sparkling waters of the Atlantic Ocean and endless miles of beach to explore.

With over \$3 billion in extraordinary condominium communities planned, Ocean Waters Development's designs will complement Florida's distinctive environment. These properties will take their inspired place along the "Coast of Dreams."

For more information, call us or visit our website.

OCEAN WATERS  
DEVELOPMENT

500 N. ATLANTIC AVENUE • DAYTONA BEACH, FLORIDA 32118  
TELEPHONE 386.267.1558 • FAX 386.267.0326 • WWW.OCEANWATERSONLINE.COM

Ocean Waters Development is seeking highly-skilled individuals to join our dynamic team. We have a grand vision of luxury oceanfront living in Ormond and Daytona Beach.

We are looking for leaders who can achieve this vision of a bright new future. Specifically, we are searching in the areas of Development, Marketing, Construction and Finance.

For immediate consideration, please email your resume to [executivecareers@oceanwatersonline.com](mailto:executivecareers@oceanwatersonline.com).

Profiles of  
**LEADERSHIP**

"Before you can inspire with emotion, you must be swamped with it yourself. Before you can move their tears, your own must flow. To convince them, you must yourself believe."  
-Winston Churchill



# YOUR GUIDE

TO ACHIEVING YOUR AGILE SOFTWARE APPLICATION GOALS



**RIDGELINE**  
STRATEGY

**RIDGELINE STRATEGY** follows the agile development method which allows us to provide you the best and quality-driven product development process. We involve our clients into our customer centric development process which includes in-person meetings, mock-ups, daily scrums, weekly or bi weekly client updates, code review and QA testings. We make sure that our development process run faster and scalable to save you time and money. Ridgeline Strategy believes that transparency is the key to building successful applications.

+1 813.360.6838 | [WWW.RIDGELINESTRATEGY.COM](http://WWW.RIDGELINESTRATEGY.COM) 



**Love Lila** 

Love Life, Love Yourself, Love Lila.

More than just an inspirational website, Love Lila is an online destination! We are the only contemporary e-tailer that inspires women daily to love life and themselves through real fashion and merchandise.

[www.love-lila.com](http://www.love-lila.com)

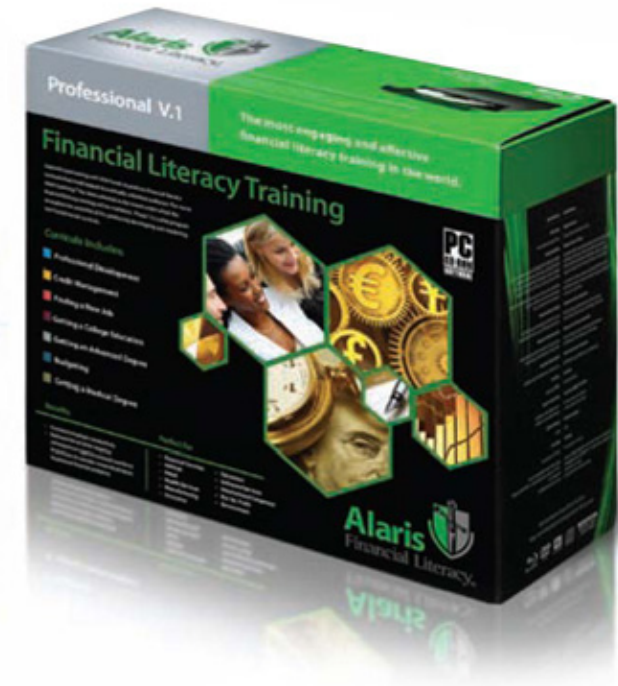














NEW MEDIA AND DIGITAL



**ENCHANTMENT BEACHFRONT RESIDENCES**

- THE BUILDING
- THE RESIDENCES
- THE TEAM
- THE NEIGHBORHOOD
- MEDIA CENTER
- CONTACT US

DOWNLOAD BROCHURE  
TERRACE VIEWS

WATCH AMENITIES VIDEO

**BUILDING GALLERY**  
CLICK PICTURES TO VIEW LARGER IMAGE

SALES CENTER: 1-800-298-0696

Enchantment | Beachfront Residences  
From the signature five-story Grand Archway, to the residences' curvaceous lines and shapes that resemble a butterfly in flight, Enchantment is among the most spectacular architecture seen in the United States for beachfront condominiums today.

**ENCHANTMENT BEACHFRONT RESIDENCES**

LOCATION MAP

- CULTURE
- ACTIVITIES
- LOCATION MAP

Driving Directions  
The property is conveniently located on Clearwater Beach, accessible from I-275 via East Bay Drive and from Route 60 (Gulf to Bay Boulevard).

Click here for MapQuest directions

Enchantment Sales Center  
Sales center inside Best Western hotel  
691 South Gulfview Blvd.  
Clearwater Beach, Florida 33767  
Phone: 727-447-6120 or 1-800-298-0696

CLEARWATER BEACH | TAMPA BAY

click map and drag to move  
zoom in zoom out

**ENCHANTMENT BEACHFRONT RESIDENCES**

TERRACE VIEWS

Click here to see views from each residence

**ENCHANTMENT BEACHFRONT RESIDENCES**

FLOORPLANS & TERRACE VIEWS | FEATURES & AMENITIES | THE VIEWS

Viewer Note: This audiovisual experience will last 7 minutes. [Get Adobe FlashPlayer](#)

**ENCHANTMENT BEACHFRONT RESIDENCES**

FLOORPLANS / VIRTUAL TERRACE VIEWS

PLEASE SELECT A FLOOR LEVEL

**FLOOR 8**  
PLEASE SELECT A RESIDENCE

Bayfront

Beachfront

St. Tropez | Unit 8  
2 Bed | 2,342 SF

Cammy | Unit 7  
3 Bed | 2,201 SF

La Riviera | Unit 6  
2 Bed | 2,382 SF

Alexandra | Unit 5  
3 Bed and Suite | 2,045 SF

St. Tropez | Unit 1  
2 Bed | 2,342 SF

Cammy | Unit 2  
3 Bed | 2,201 SF

La Riviera | Unit 3  
2 Bed | 2,382 SF

Alexandra | Unit 4  
3 Bed and Suite | 2,045 SF

THESE VIEWS ARE REPRESENTATIVE AND AS CLOSE TO ACTUAL BASED ON THE TECHNOLOGY USED. HOWEVER, THE DEVELOPER MAKES NO WARRANTY AS TO THE ACCURACY OF THE EQUIPMENT, OPERATION OR TECHNOLOGY. THE VIDEO DISPLAYED ARE BASED ON THE CONDITION OF SURROUNDING PROPERTY AT THE TIME THE PICTURES WERE TAKEN AND MAY VARY BASED ON CHANGES IN CONDITION OF THESE SURROUNDING PROPERTIES.



HOME WHO WE ARE THE PURSUIT OF EXCELLENCE HEALTH & WELLNESS CONTACT

KRIS CASTELLANOS

THE PURSUIT OF EXCELLENCE

WELCOME!

My name is Kris Castellanos and I am passionate that you will take this information and use it to fulfill the God-sized dreams He has put in your heart whether it be in ministry, business, or just being the best you that he created you to be!

WHO WE ARE

FOURS STEPS TO EXCELLENCE

The Pursuit of Excellence program focuses on improving four main areas of your life or business.

1. Spiritual
2. Health
3. Emotional
4. Financial

LEARN MORE

HOME WHO WE ARE THE PURSUIT OF EXCELLENCE HEALTH & WELLNESS CONTACT

KRIS CASTELLANOS

THE PURSUIT OF EXCELLENCE

WELCOME!

MY NAME IS KRIS CASTELLANOS AND I AM PASSIONATE THAT YOU WILL TAKE THIS INFORMATION AND USE IT TO FULFILL THE GOD-SIZED DREAMS HE HAS PUT IN YOUR HEART WHETHER IT BE IN MINISTRY, BUSINESS, OR JUST BEING THE BEST YOU THAT HE CREATED YOU TO BE!

WHO WE ARE

FOURS STEPS TO EXCELLENCE

The Pursuit of Excellence program focuses on improving four main areas of your life or business.

1. Spiritual 2. Health 3. Emotional 4. Financial

LEARN MORE

HEALTH & WELLNESS

evolv

HEALTH PLEDGE

100% Money Back Guarantee

CONNECT WITH KRIS

HOPE MOVEMENT

HOPE PLEDGE

COMPLIMENTARY RESOURCES

First Name: \_\_\_\_\_

Last Name: \_\_\_\_\_

Address: \_\_\_\_\_

Phone Number (123-456-7891): \_\_\_\_\_

Zip Code: \_\_\_\_\_

How did you hear about us? \_\_\_\_\_

Comments: \_\_\_\_\_

\* Required field. You must enter valid information for the fields required for your form to submit.

Submit

Connect with Kris to start the conversation!

Facebook Instagram Twitter YouTube

COMPLIMENTARY RESOURCES

Send us your email today to receive a wealth of information to help you make informed decisions.

First Name: \_\_\_\_\_

Last Name: \_\_\_\_\_

Address: \_\_\_\_\_

Phone Number (123-456-7891): \_\_\_\_\_

Zip Code: \_\_\_\_\_

How did you hear about us? \_\_\_\_\_

Comments: \_\_\_\_\_

\* Required field. You must enter valid information for the fields required for your form to submit.

Submit

Connect with Kris to start the conversation!

Facebook Instagram Twitter YouTube

COMPLIMENTARY RESOURCES

Send us your email today to receive a wealth of information to help you make informed decisions.

First Name: \_\_\_\_\_

Last Name: \_\_\_\_\_

Address: \_\_\_\_\_

Phone Number (123-456-7891): \_\_\_\_\_

Zip Code: \_\_\_\_\_

How did you hear about us? \_\_\_\_\_

Comments: \_\_\_\_\_

\* Required field. You must enter valid information for the fields required for your form to submit.

Submit

HOME WHO WE ARE THE PURSUIT OF EXCELLENCE HEALTH & WELLNESS CONTACT

KRIS CASTELLANOS

THE PURSUIT OF EXCELLENCE

HEALTH & WELLNESS

WE'RE SO CONFIDENT OUR PRODUCTS WORK, WE'LL GIVE YOU YOUR MONEY BACK IF YOU'RE NOT SATISFIED WITH YOUR RESULTS. SIMPLE HEALTH. GUARANTEED.

evolv

HEALTH PLEDGE

100% Money Back Guarantee

CONNECT WITH KRIS

HOPE MOVEMENT

HOPE PLEDGE

COMPLIMENTARY RESOURCES

First Name: \_\_\_\_\_

Last Name: \_\_\_\_\_

Address: \_\_\_\_\_

Phone Number (123-456-7891): \_\_\_\_\_

Zip Code: \_\_\_\_\_

How did you hear about us? \_\_\_\_\_

Comments: \_\_\_\_\_

\* Required field. You must enter valid information for the fields required for your form to submit.

Submit

Connect with Kris to start the conversation!

Facebook Instagram Twitter YouTube

COMPLIMENTARY RESOURCES

Send us your email today to receive a wealth of information to help you make informed decisions.

First Name: \_\_\_\_\_

Last Name: \_\_\_\_\_

Address: \_\_\_\_\_

Phone Number (123-456-7891): \_\_\_\_\_

Zip Code: \_\_\_\_\_

How did you hear about us? \_\_\_\_\_

Comments: \_\_\_\_\_

\* Required field. You must enter valid information for the fields required for your form to submit.

Submit

HOME WHO WE ARE THE PURSUIT OF EXCELLENCE HEALTH & WELLNESS CONTACT

KRIS CASTELLANOS

THE PURSUIT OF EXCELLENCE

CONTACT US

PHONE US, FOLLOW US, GIVE US, WE'RE ALWAYS UP FOR LIVED INTERACTION. WE LOOK FORWARD TO GIVING THE CONVERSATION TODAY!

813.486.1984

REACH OUT TODAY TO CONNECT WITH US

Request Form

First Name: \_\_\_\_\_

Last Name: \_\_\_\_\_

Address: \_\_\_\_\_

Phone Number (123-456-7891): \_\_\_\_\_

Zip Code: \_\_\_\_\_

How did you hear about us? \_\_\_\_\_

Comments: \_\_\_\_\_

\* Required field. You must enter valid information for the fields required for your form to submit.

Submit

Connect with Kris to start the conversation!

Facebook Instagram Twitter YouTube

COMPLIMENTARY RESOURCES

Send us your email today to receive a wealth of information to help you make informed decisions.

First Name: \_\_\_\_\_

Last Name: \_\_\_\_\_

Address: \_\_\_\_\_

Phone Number (123-456-7891): \_\_\_\_\_

Zip Code: \_\_\_\_\_

How did you hear about us? \_\_\_\_\_

Comments: \_\_\_\_\_

\* Required field. You must enter valid information for the fields required for your form to submit.

Submit



PAYMENT PORTAL • REQUEST PROPOSAL • BLOG • CREW ENLISTMENT • HANDBOOK • CLIENT SUPPORT

Sixwatch *Stronger together™* MENU

# Onsite Support

THERE IS A HERO IN EVERY HEART OF OUR SIXWATCH CREW JUST WAITING FOR IGNITION. WE ARE GRATEFUL FOR THE OPPORTUNITY TO USE OUR GIFTS AND TALENTS TO SERVE AS FAITHFUL STEWARDS.

LEARN MORE

PAYMENT PORTAL • REQUEST PROPOSAL • BLOG • CREW ENLISTMENT • HANDBOOK • CLIENT SUPPORT

Sixwatch *Stronger together™* MENU

## Impeccable Reputation

Our organization is proud to establish strategic partnerships with some of the most innovative technology companies in the industry. These collaborations enable us to drive your enterprise towards sustained and unparalleled growth. By leveraging our expertise and these cutting-edge partnerships, we can help drive your business forward and achieve unparalleled success.

LEARN MORE

Google Cloud  
Azure  
Microsoft 365  
aws

03

PAYMENT PORTAL • REQUEST PROPOSAL • BLOG • CREW ENLISTMENT • HANDBOOK • CLIENT SUPPORT

Sixwatch *Stronger together™* MENU

## Welcome to Sixwatch

“ We understand the challenges businesses face when searching for total IT strategy, security, support, and leadership services. We aim to help our clients soar to new heights, by setting our sights on our mission – **OPERATION CERTITUDE** – which is to instill unwavering confidence allowing clients to focus on their business tactics. *We've got your six!*”

LEARN MORE

02

PAYMENT PORTAL • REQUEST PROPOSAL • BLOG • CREW ENLISTMENT • HANDBOOK • CLIENT SUPPORT

Sixwatch *Stronger together™* MENU

## Meet the Crew

At Sixwatch, we hear over and over again that it feels different to work with us. Why? A uniquely collaborative culture full of passionate and intelligent people who care more about your success. *We've got your six!*

LEARN MORE

05

PAYMENT PORTAL • REQUEST PROPOSAL • BLOG • CREW ENLISTMENT • HANDBOOK • CLIENT SUPPORT

Sixwatch *Stronger together™* MENU

HOME • SERVICES • ABOVE & BEYOND

# Above & Beyond

At Sixwatch, we are dedicated to providing exceptional service to our clients each day. By partnering with us, you can expect a customized experience that focuses on the growth and well-being of your business.

Our services include cloud, backup, security, strategy, and total IT care. Simply having the right tools is not enough to achieve sustainable and secure success. To effectively utilize these tools and make progress towards your goals, you need the expertise of a dependable managed IT service and security provider.

Sixwatch was created to help SME's reach their full potential by combining the appropriate strategy with the right tools. We offer two outstanding packages - our premium package Alpha and our core package Bravo - to provide total IT care and help you achieve your objectives.

We believe in supporting people, not just computers.

Anyone can provide you with tools, but only the right managed IT service and IT security provider can make the most of them to help you sustainably and securely grow towards your goals. Sixwatch was established to help individuals succeed and realize their potential by combining the right tools with the right strategy.

EXECUTIVES	MANAGERS	INDIVIDUALS
Our focus is on providing exceptional support for executives and leaders with a vision for growth. We offer responsive, hands-on IT assistance to manage risks associated with your IT infrastructure, systems, and data.	Achieving your end goals and targets while ensuring the satisfaction of your employees and managing your processes is crucial. However, you don't have to tackle these challenges by yourself.	Individual contributors are crucial to the success of organizations. At Sixwatch, our team of IT experts is always prepared to address any IT-related obstacles that may be hindering your progress.







**The price of greatness is responsibility.**

Responsible companies hire management consultants specializing in IT asset management, software asset management, software license compliance, and advisory services. We guide our clients in resolving their most daunting organizational, technology, and compliance challenges. Deeply committed to their success, we are driven to produce results that frequently defy expectations.

**LET'S START THE CONVERSATION**

**Expertise, Innovation, and Advise.**

AN ENTREPRENEUR SOURCE FROM 2024

RESISTANCE REORGANIZATION (ROR) AWARDS

**FILL OUT FORM TO SIGN UP**

First Name (Required)

Email Address (Required)

Mobile Phone (Optional)

**SIGN UP**

**CORPORATE SOLUTIONS**

Leadership in IT asset management, software asset management, software license compliance, license administration, software audit response, program review, cost, and charitable boards.

[VISIT PHARA'S COMPANY](#)

**A PATH FOR SUCCESS**

Lead a frequent leader in conferences on industry and technology issues and have published articles in a variety of publications. Please connect on LinkedIn, Facebook and Twitter.

**LET'S START**

**HOW I MAKE AN IMPACT**

Assist clients on the technical, financial and legal side resulting from transformation of companies. IT asset management (ITAM) and software asset management (SAM) programs.

[VISIT PHARA'S COMPANY](#)

**What's New?**

**Pocket CIO: The Guide to Successful IT Asset Management**

PHARA MICHAELIAN | PHARA BOOKS

ISBN: 9781092512018 | Paperback: 288 pages | Region: US | EAN: 9781092512018 | Publication date: 2022-10-01 | Dimensions: 6.0 x 9.0 x 0.8 in.

**SELECT QUANTITY**  **ADD TO CART**

**DESCRIPTION**

Pocket CIO: The Guide to Successful IT Asset Management is a handy guide full of strategies for your organization. As business priorities have become more digital and customers become digital data points, the CIO's reach and profile have expanded. Some would argue it is becoming just a fancy title, some CIO responsibilities are being transferred to other executive roles. In addition to a chief technology officer and chief information security officer, a host of new "Information Chiefs" are emerging up with titles that include chief data officer, chief digital officer and chief analytics officer.

**PRE-ORDER YOUR COPY TODAY**



HOME | ABOUT PHARA | AREAS OF EXPERTISE | ENTREPRENEUR | SHOP

Phara Michaelian | 813-524-4974 | [info@pharamichaelian.com](mailto:info@pharamichaelian.com)

Resisting the soft power through the transformation of our world.



**IT Management is doing things efficiently.**

Achieving success is one thing. Sustaining it over the long haul is quite another. Phara offers consulting services and strategic plans that allow you to grow your revenue, clients, profits, services, quality and more. All the while, maintaining and sustaining your business. We're required to make a positive impact on our clients, our people, our communities and the world around us.

**LET'S START THE CONVERSATION**

**What's New?**

**Pocket CIO: The Guide to Successful IT Asset Management**

PHARA MICHAELIAN | PHARA BOOKS

ISBN: 9781092512018 | Paperback: 288 pages | Region: US | EAN: 9781092512018 | Publication date: 2022-10-01 | Dimensions: 6.0 x 9.0 x 0.8 in.

**SELECT QUANTITY**  **ADD TO CART**



**DESCRIPTION**

Pocket CIO: The Guide to Successful IT Asset Management is a handy guide full of strategies for your organization. As business priorities have become more digital and customers become digital data points, the CIO's reach and profile have expanded. Some would argue it is becoming just a fancy title, some CIO responsibilities are being transferred to other executive roles. In addition to a chief technology officer and chief information security officer, a host of new "Information Chiefs" are emerging up with titles that include chief data officer, chief digital officer and chief analytics officer.

**PRE-ORDER YOUR COPY TODAY**

**In the new digital landscape, IT is no longer a business support function, it is a fundamental building block of the business. Phara guides CIOs and their colleagues to reconstruct the IT function top to bottom with industry genius.**

PHARA MICHAELIAN | PHARA BOOKS

ISBN: 9781092512018 | Paperback: 288 pages | Region: US | EAN: 9781092512018 | Publication date: 2022-10-01 | Dimensions: 6.0 x 9.0 x 0.8 in.

**SELECT QUANTITY**  **ADD TO CART**

**Expertise, Innovation, and Advise.**

AN ENTREPRENEUR SOURCE FROM 2024

RESISTANCE REORGANIZATION (ROR) AWARDS

**FILL OUT FORM TO SIGN UP**

First Name (Required)

Email Address (Required)

Mobile Phone (Optional)

**SIGN UP**

HOME | ABOUT PHARA | AREAS OF EXPERTISE | ENTREPRENEUR | SHOP

Phara Michaelian | 813-524-4974 | [info@pharamichaelian.com](mailto:info@pharamichaelian.com)

Resisting the soft power through the transformation of our world.



**Proven, sustainable and remarkable results.**

Learn about how to achieve all phases of your business plan, including your financial and legal. We provide a comprehensive, step-by-step guide to building a successful business. We're required to make a positive impact on our clients, our people, our communities and the world around us.

**LET'S START THE CONVERSATION**

**Areas of Expertise**

Phara is the Founder and CEO of Michaelian a Tampa Bay area management consulting company specializing in IT asset management, software asset management, software license compliance and advisory services. She has also published her own book, *Phara Michaelian: A Guide to Successful IT Asset Management*. She provides a comprehensive, step-by-step guide to building a successful business. We're required to make a positive impact on our clients, our people, our communities and the world around us.

- CONSULTING SERVICES**

Client expectations are high, but so are the standards by which we measure success. Our people have both of these and our unique ability to cut through the noise and uncover new opportunities.


- IT SOFTWARE ASSET MANAGEMENT**

Our cloud strategy and technical ITAM and SAM solutions. Without hedge your social credit, reduce your software risk, and optimize your return on investment.


- TECHNOLOGY**

Building organizational IT maturity such that IT becomes a true collaboration and innovation hub, providing the data and insights that increase your IT ROI, reduce costs of IT, and improve IT's operating efficiency.


- ORGANIZATION & FINANCE**

Another change in corporate culture and organizational chaos. Address strategy execution, and financial risk and mitigation. Manage change from the Change Management expertise of Phara to drive you forward.


- OPERATIONS**

Phara's IT team provides identify and create regular status. Provide reporting and strategic planning. Set team priorities, build culture and create meaning. Make you stand the test of time.


- ANALYTICS & PERFORMANCE**

Business that solves your problems operates at maximum efficiency. Reduce cost, increase customer loyalty, and generate new solutions. The question we're asking: How do you measure your success?



**CONTACT SERVICES**

- [CONSULTING SERVICES](#)
- [IT SOFTWARE ASSET MANAGEMENT](#)
- [TECHNOLOGY](#)
- [ORGANIZATION AND CHANGE](#)
- [OPERATIONS AND GROWTH](#)
- [ANALYTICS & PERFORMANCE](#)

**White Paper Resources**

**POLICY AND PROFESSIONAL REGULATIONS: THE NEW ITAM MANAGEMENT**

The proliferation of new and emerging regulations that impact ITAM and SAM, including the new data privacy laws, the new ITAM and SAM regulations, and the new ITAM and SAM regulations.

**DOWNLOAD PDF**

**Subscribed to our Newsletter**

There are three things that you should know about our newsletter: we have a lot of great content for you. We're required to make a positive impact on our clients, our people, our communities and the world around us.

**DOWNLOAD PDF**

HOME | ABOUT PHARA | AREAS OF EXPERTISE | ENTREPRENEUR | SHOP

Phara Michaelian | 813-524-4974 | [info@pharamichaelian.com](mailto:info@pharamichaelian.com)

Resisting the soft power through the transformation of our world.



**Turns any day into a weekend. 2011 Cayenne.**

Reeves VW logo and navigation menu.

What's new:

- Michael Maehl: "Technical and scientific knowledge are in demand" 10-Mar-09
- Porsche Presents 918 Spyder High-Performance Concept Sports Car in Geneva 10-Mar-01
- World Debut in Geneva: The New Porsche Cayenne 10-Feb-24

for Details on These Great Deals From Your Neighborhood VW Dealer.

Reeves VW logo

Through August 31, 2010 financing as low as **0%** Volkswagen CC for 60 Months

**2009/10 WINNER Pinnacle Club RETAILER EXCELLENCE AWARD**

Great Neighbor Sale!

0% Volkswagen Jetta financing as low as 1.9% for 60 months with approved credit through VW Credit.

Reeves VW logo

**LUXURY'S RESIDENCE**

DEJA NEW PEACE OF MIND

Reeves VW logo

**LUXURY'S RESIDENCE**

THE 2011 PANAMERA & CAYENNE

Reeves VW logo

**DRIVE TO SAVE SALE!**

WE ARE DRIVEN TO SAVE YOU MONEY

Reeves VW logo

**Open the top. The throttle. Your mind.**

With a Porsche Approved Certified Pre-Owned Vehicle.

Reeves VW logo and navigation menu.

What's new:

- Michael Maehl: "Technical and scientific knowledge are in demand" 10-Mar-09
- Porsche Presents 918 Spyder High-Performance Concept Sports Car in Geneva 10-Mar-01
- World Debut in Geneva: The New Porsche Cayenne 10-Feb-24

**Perfect. Then reperfected. 2011 Panamera.**

Reeves VW logo and navigation menu.

What's new:

- Michael Maehl: "Technical and scientific knowledge are in demand" 10-Mar-09
- Porsche Presents 918 Spyder High-Performance Concept Sports Car in Geneva 10-Mar-01
- World Debut in Geneva: The New Porsche Cayenne 10-Feb-24

**LUXURY'S RESIDENCE**

COME IN TO EXPERIENCE DEJA NEW PEACE OF MIND

Reeves VW logo

**DRIVE TO SAVE SALE!**

WE ARE DRIVEN TO SAVE YOU MONEY

Reeves VW logo



Flow Fitness Cordially Invites You To Our Riverview, Florida.

# Grand Opening!

APRIL 22, 2017  
11:00AM-2:00PM

Spirit 90.5 The Center Riverview  
Center of Excellence

FREE TO THE PUBLIC • TOUR OUR NEW BOUTIQUE • MUSIC AND ENTERTAINMENT • REFRESHMENTS  
PRIZES AND GIVEAWAYS • INSTRUCTOR DEMOS • REVIVE ROOM TOURS • FRUIT INFUSED WATER SAMPLES

**VIM** Healing, prophetic ministry.

An Exclusive Online Webinar hosted by Jesse and Kara Birkey.

Featuring the author of "The Shack"

## William P. Young

Join Us This Friday!  
**12/09/2016**  
09:00 PM - EST

Virtual Interactive Ministry (VIM) is a FREE, hour long gathering for LIVE healing and prophetic ministry facilitated through a webinar format.

THE SHACK  
WILLIAM P. YOUNG

Liked Message

An Exclusive Online Webinar hosted by Jesse and Kara Birkey.

Featuring the author of "The Shack"

## William P. Young

Join Us This Friday!  
**12/09/2016**  
09:00 PM - EST

Virtual Interactive Ministry (VIM) is a FREE, hour long gathering for LIVE healing and prophetic ministry facilitated through a webinar format.

THE SHACK  
WILLIAM P. YOUNG

**VIM** Healing, prophetic ministry.

# RIDE ON!

PERPETUALLY ENGAGE WITH VALUED CUSTOMERS ACROSS SUSTAINABLE SOCIAL MEDIA COMMUNITIES

Available at **amazon**

THE TABLE AND THE DREAM  
WHAT TO DO ORN YOU KNOW YOU'RE FEEL

Finding Rest in a World Gone Berserk

THE QUITTER'S MANUAL  
Jeremy Mangerchine

THE LONGEST BRIDGE ACROSS WATER  
AN ORDINARY MAN'S ENCOUNTER WITH AN UNORDINARY GOD

Jeremy Mangerchine

Add Friend + Follow Message

Timeline About Friends 1 Mutual Photos More



Exclusive For Our Loyal Customers

## Reeves Land Rover 75,000 Mile Club

### SECURE YOUR PEACE OF MIND.

To say thank you for your loyalty, we formed the Reeves Land Rover 75,000 Mile Club. There are no fees to join, just huge savings including 20% off services and parts\*, 1 year/10k mileage warranty for most repairs, and more.

Reeves Land Rover has 7 factory-trained technicians with over 100 years combined experience ready to serve you. To schedule an appointment, call (813) 930-2505 or click on the link below.

**Reeves Land Rover Club Benefits**

- 1. **LOANER CARS:** We have a fleet of late model loaners available for your use while your vehicle is in for service.
- 2. **PRICE PROTECTION GUARANTEE:** This will match any written estimate from any shop that uses Original Land Rover Parts.
- 3. **FASTSERVICE:** We understand your time is valuable. With Land Rover FastService, our team tends to your vehicle immediately while you make yourself comfortable and enjoy our center's amenities including wireless internet and complimentary refreshments.
- 4. **FULL SERVICE TIRE SHOP:** Competitive pricing on all wheel and tire service.

**Reeves Land Rover 75,000 Mile Club Features:**

- 20% off of services and parts\*
- 120,000 mile warranty
- Price protection guarantee (see all services for details)
- \*15% and 20% does not apply after first touch. Excludes tire purchases, up to \$500 discount per visit.

**Reeves Land Rover Service Comparison:**

We understand that cost may be a deciding factor when choosing a company to service your vehicle. We invite you to visit Reeves Land Rover and experience what sets our service apart from all others.

Services	Reeves Land Rover	Others	Services	Reeves Land Rover	Others
Complimentary loaner vehicles	✓	?	Complimentary shuttle service	✓	?
Price protection guarantee	✓	?	Land Rover factory-trained technicians	✓	?
Original Land Rover Parts (100% OEM mileage warranty)	✓	?	Land Rover approved diagnostic equipment	✓	?
Complimentary vehicle wash or service	✓	?	One-stop shopping	✓	?
Complimentary 71 point written inspection with every visit	✓	?	Complimentary 90-day	✓	?
			Complimentary refreshments	✓	?

**Build Your Own Land Rover**

View Vehicle Explorer

**Land Rover Service**

Make an Appointment

**Reeves Locations**

Driving, Directing and Way

www.DriveReeves.com | Driven by a Higher Standard® | Telephone 813.930.2505

DO NOT REPLY TO THIS EMAIL. This email address does not accept replies. If you have a customer service issue or question regarding this communication, please call 813.930.2505.

If you no longer wish to receive email from Reeves Import Vehicles, [click here](#) to unsubscribe. Please DO NOT reply to this email to unsubscribe.

## Think Pink. Think ProCare.

ProCare, a proud supporter of breast cancer awareness, is donating a portion of our sales to National Breast Cancer Foundation during the month of October.

**Our mission includes increasing awareness through education, providing diagnostic breast care services for those in need, and providing nurturing support services.**

**“The National Cancer Institute recommends... that all women undergo annual mammograms beginning by age 40... early detection of breast cancer...”**

TAMPA, FLORIDA — OCTOBER 7, 2014. ProCare, a national mammography and language services company headquartered in Tampa, is pleased to announce our continuing drive to raising awareness through educational support. Our new plan is to donate our support to the National Breast Cancer Foundation (NBCF) during the month of October.

We understand that increased healthcare costs and a rapidly increasing percentage of uninsured women, many simply cannot afford the cost of screening tests. These women are at a significantly higher risk of dying from breast cancer if they do not get it. For that very reason, we are dedicated to donating a portion of our sales to NBCF.

888.981.7878 toll free [Get Appointment](#)

**“LIMITED OFFER: FREE STRESS RELIEF REASON FOR YOUR SUPPORT.”**

As a sign of our appreciation, you can get your ProCare pink ribbon stress relief from your local office.

**Why ProCare Chose NBCF.**

Jennifer Hall, Founder, ABCF

The National Breast Cancer Foundation was founded in 1971 by breast cancer survivors. Under high NBCF president to give more power to help make and make women aware of the need for reducing their breast cancer and providing their mammography services to women.

The National Breast Cancer Foundation is committed to raise funds through early detection and to provide mammography for breast in need. Our mission includes: increasing awareness through education, providing diagnostic breast care services for those in need, and providing nurturing support services.

**HOME • COMPANY SERVICES • ORDER ONLINE • PROPOSALS • NEWS & EVENTS • CONTACT**

Mammography Technology Dept. 4810 Eastshore Blvd., Suite 614 Tampa, Florida 33605 • 888.981.7878 toll free  
© Copyright 2014. ProCare is a registered trademark. All Rights Reserved.

Contact Us email: [info@procareusa.com](mailto:info@procareusa.com)  
Social connect with [LinkedIn](#) | [Facebook](#) | [Twitter](#) | [YouTube](#)

ProCare®/Confidential information may be contained in this message. If you are not the addressee indicated in this message (or responsive to this message) you should not disseminate, distribute, copy, reproduce or alter the message in any way. If you have received this message in error please notify the sender by reply email, although this notification and any attachments are intended for you only and do not constitute an offer. The recipient of this message is responsible for ensuring the content is not disclosed to unauthorized persons and is not responsible for any damage caused by any use of the information contained in this message. An acknowledgment or reply is not required unless otherwise specified.

## CHRISTMAS IS LOADING...

With only a week left until the big day, I wanted to take this moment to say Merry Christmas and Happy New Year. Enjoy your holidays and thank you for being a loyal client.

**STRATEGY**

CONSULTING  
Company and Product Naming  
Brand Architecture  
Business Prioritization & ROI  
Brand Management  
External Brand Strategy  
Internal Brand Management  
Go to Market Strategy  
Identity Standards Manual

**PRINT**

IDENTITY  
Logo Design  
Corporate Identity Systems

COMMUNICATIONS  
Brochures  
Employee Communications  
Marketing Collateral  
Posters  
Environment Graphics  
Books  
Packaging  
Illustration

**INTERACTIVE**

ONLINE  
User Experience Design  
Information Architecture  
Rich Media Creation  
E-Mail Blast Design  
Digital Campaign Management

SOCIAL  
Social Media Strategy  
Site Creation  
Social Content Management  
Competitive Analysis

**Evaluating Your Qualified Default Investment Alternative (QDIA) Retirement Plan Quiz**

CapTrust Advisors is an independent consulting firm providing fiduciary services to retirement plans across the country. CapTrust provides in-depth reviews of retirement plans helping plan sponsors evaluate fees, services and plan investments.

1. Does your retirement plan offer a Qualified Default Investment Alternative (QDIA)?
2. Did you select your plans QDIA several years ago?
3. Do you have a process for reviewing your plans investments?
4. Do you have a documented process for the type of investment (Balanced Fund, managed account or Target Date Fund (TDF)) you offer as your QDIA?

**Did you answer YES to any of these questions?**

Then it's time for some more due diligence. We explain it all here, please visit [www.CapTrustAdvisors.com](http://www.CapTrustAdvisors.com)

For more information, or to receive a detailed cost comparison of your plan, please contact:  
**Jeff Island at (813) 219-6000, or contact us via [eMail](#)**

CapTrust Advisors | 102 W. Shiloh Street, Suite 402 | Tampa, FL 33602  
[www.CapTrustAdvisors.com](http://www.CapTrustAdvisors.com)

[Contact Us Email](#)  
This email was sent to [stan.isher@captrust.com](mailto:stan.isher@captrust.com) by [jeff.island@captrustadvisors.com](mailto:jeff.island@captrustadvisors.com)  
Instant removal with [Unsubscribe](#) | [Privacy Policy](#)

©2014 CapTrustAdvisors, LLC. All Rights Reserved. CapTrustAdvisors, LLC does not render legal, accounting or tax advice. Please call your tax or legal advisors before making any decision that may have tax consequences. CapTrustAdvisors, LLC is a registered investment advisor with the SEC.

Privileged/Confidential information may be contained in this message. If you are not the addressee indicated in this message (or responsible for delivery of the message to such person), you may not copy or disseminate this message. In such case, please destroy this message and kindly notify the sender by reply email. Although this transmission and any attachments are intended to the list of any other addressee that might affect any particular system into which it is received and opened, it is the responsibility of the recipient to ensure that it is used for and its responsibility is assumed by CapTrustAdvisors, Inc., its subsidiaries and affiliates, as applicable. Do any loss or damage arising in any way from its use.



**LET'S CREATE** a modern culture that promotes innovation over me-too thinking, purpose over process, collaboration over silos. Sana defines clarity and brilliance that inspires brand connections through the power of strategic thinking and creative expression. Let's connect today!

[sanabranding.com](https://sanabranding.com)

Tampa, Florida 33612  
727.645.3621 Direct  
[jeffrey@sanabranding.com](mailto:jeffrey@sanabranding.com)

